

Canon

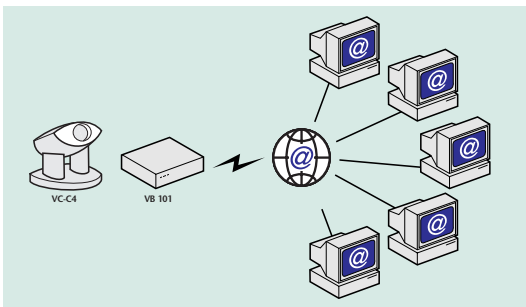
Imaging across networks

VB101 Network Camera Server

DEDICATED SET BOX SYSTEM
FOR WEBCASTING SOLUTIONS







Complete VC-C4/VC-C4R compatibility

Canon's new Communication Camera VC-C4 and VC-C4R (ceiling support model) provide the highest standards available for pan/tilt/zoom cameras. Compact and lightweight, they offer superior performance and a far wider control range, making them perfect partners for the Network Camera Server.

High quality images, fast frame speed

The Network Camera Server VB101 is capable of image capture at a speed of up to 30 frames per second. As users can control the image quality as well as the capture rate (at speeds between 0.1 and 30 fps) the settings can be programmed for optimized efficiency in a network environment.

Precise control and full flexibility

Up to 4 video cameras can be connected to the system, with 2 selected for camera control. Using Canon Communication Cameras, users can pan, tilt and zoom remotely, or restrict settings. The VB101 is fully compatible with standard internet/intranet protocols - and features built-in Web server functions for Web pages.

Simple set up and management control

You can set up and manage the system remotely, without ever visiting the actual installation site. Simply access the VB101 server using the Web browser on your PC. This also allows you to easily control server settings direct from your desktop - such as frame size and image capture size - and even change the IP address.

Full range of versatile features

2 PCMCIA card slots ensure easy expansion, allowing you to add a modem or flash memory as required. By programming the settings page and Web page data to optional flash memory, a single VB101 server can be used to transmit data and video images across the web. While powerful security functions ensure that the destination for video transmissions can be restricted.

Affordable webcasting without limits

Link Canon's compact, affordable Network Camera Server VB101 to your company's internet or intranet site and transform webcasting into the ultimate interactive experience. Simple set up, precise control of connected cameras and innovative features make it the easiest way to add excitement to e-commerce applications and improve the effectiveness of real-time remote monitoring.

VB101 SPECIFICATIONS

CPU:	MPC860DT50MHz (50MHz)
Main memory:	16M byte (SRDAM)
FLASHROM:	4M byte
OS:	DRYOS (Canon Original Real time OS)
Protocol:	TCP/IP, HTTP, FTP, SMTP, WebView
Image compression method:	Motion-JPEG (Live image) / JPEG (Still image)
Capture rate:	0.1~30fps
Image size:	Capture Size: 160 x 120, 320 x 240, 640 x 240 Display size: 80 x 60, 160 x 120, 320 x 240, 640 x 480 Full Screen
Server function:	HTTP Server / FTP Server / WebView Server
Limit of each client connect:	Max. 20
Client access limitation:	IP Address, Password
Camera control queue length:	0~20
Camera control time:	1~3600 sec.
Camera position setting:	Up to 8 position
AC adapter:	Input: AC100/120/220/240V AC85~264V Output: 13VDC, 1.8A (max)
Dimension (WxDxH):	248 x 165 x 52mm
Weight:	1.3kg (Main Unit Only)
Interface	
Video Input:	4 Input(NTSC/PAL Auto Switch, BNC x 2, RCA x 2)
Synchronous system:	Internal synchronization
Serial:	RS-232C x 3 (mini DIN8, camera control x 2, initial setting x 1)
Network:	Ethernet x 1(RJ45, 10/100 auto switch), POTS
Card slot:	Card Slot x 2(5V only)
External device In/Out:	In x 2, Out x 2



VC-C4/VC-C4R SPECIFICATIONS

Video signal:	PAL
Total number of pixels:	470,000 (440,000 effective) pixels
S/N ratio:	48 dB
Zoom:	Powered 16x
F No.:	f/1.4 to 2.8
Focus:	Auto/manual
Aperture:	Auto iris servo system
Pan angle range:	VC-C4: $\pm 100^\circ$, VC-C4R: $\pm 170^\circ$
Tilt angle range:	VC-C4: -30° to $+90^\circ$, VC-C4R: $+10^\circ$ to -90°
Pan/Tilt rotation speed:	Pan: 1 to 90 deg/s, Tilt: 1 to 70 deg/s
Video out:	RCA pin jack
S Video out:	1 mini-DIN 4-pin
RS-232C:	2 mini-DIN 8-pin sockets
Cascade control:	9 cameras
Dimensions (WxDxH):	100 x 112 x 89.5mm
Weight:	VC-C4: 375g / VC-C4R: 440g
Power supply:	220-240 V
Power consumption:	12 W
Voltage:	13 V DC (when using the AC adapter)

TM All company and/or product names are trademarks and/or registered trademarks of their respective manufacturers in their markets and/or countries.

Canon reserves the right to change specifications without notice.

Canon

Imaging across networks

Canon Electronics Inc.

1248, Shimokagemori, Chichibu-shi,
Saitama 369-1892, Japan

Europe, Africa and Middle East

Canon Europa N.V.

P.O. Box 2262, 1180 EG Amstelveen,
the Netherlands
www.canon-europa.com

English Edition 0018W249

© Canon Europa N.V., 2000 (1100)



© 1986, WWF-World Wide Fund For Nature (formerly World Wildlife Fund)